

## PHYSICAL AND CHEMICAL PROPERTIES

**Product Name:** Benzoylalbiflorin

**Catalog Number:** BCX0883

**Cas No.:** 184103-78-4

**Formula:** C<sub>30</sub>H<sub>32</sub>O<sub>12</sub>

**M.Wt:** 584.57

**Purity:** >98%

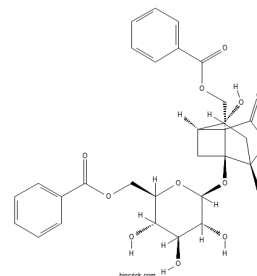
**Physical Description:** N/A

**Synonyms:** N/A

**Chemical Name:** [(2R,3S,4S,5R,6S)-6-[[[(1S,3R,4R,6S,9S)-9-(benzyloxymethyl)-4-hydroxy-6-methyl-8-oxo-7-oxatricyclo[4.3.0.0<sup>3,9</sup>]nonan-1-yl]oxy]-3,4,5-trihydroxyoxan-2-yl]methyl benzoate

**SMILES:** CC12CC(C3CC1(C3(C(=O)O2)COC(=O)C4=CC=CC=C4)OC5C(C(C(C(O5)COC(=O)C6=CC=CC=C6)O)O)O)

**Solubility:** N/A



## STORAGE AND SHIPPING

**Storage:** Store the product in sealed, cool and dry condition.

**General tips:** For obtaining a higher solubility, please warm the tube at 37° and shake it in the ultrasonic bath for a while. Stock solution can be stored below -20° for several months.

**Shipping Condition:** Ship with RT , or blue ice upon request

## INTENDED USE

1. Reference standards;
2. Pharmacological research;
3. Food research;
4. Synthetic precursor compounds;
5. Intermediates & Fine Chemicals;
6. Others.

## CAUTION!

**FOR RESEARCH PURPOSES ONLY.**

**NOT FOR HUMAN, VETERINARY DIAGNOSTIC OR THERAPEUTIC USE.**

*Specific storage and handling information for each product is indicated on the product datasheet. Most BioCrick products are stable under the recommended conditions. Products are sometimes shipped at a temperature that differs from the recommended storage temperature. Short-term storage of many products are stable in the short-term at temperatures that differ from that required for long-term storage. We ensure that the product is shipped under conditions that will maintain the quality of the reagents. Upon receipt of the*

*product, follow the storage recommendations on the product data sheet.*

---

F9-15, Building B2, Tianfu Life Science Park, 88 South Keyuan Road, Hi-Tech Zone, Chengdu, Sichuan 610041, PRC  
Tech Support: service@biocrick.com Tel: +86-28-8543-3893 FAX: +86-28-8543-3893